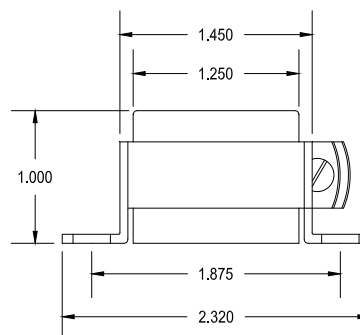
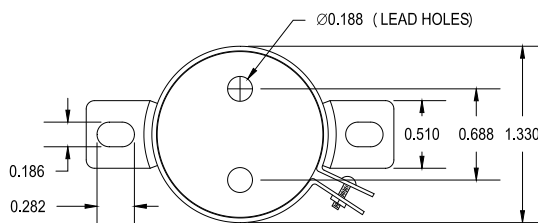


# 140PEX

CHASSIS MOUNT – SHIELDED  
IMPEDANCE MATCHING TRANSFORMER

This transformer operates in the 20 Hz to 20 KHz range. The metal can provides excellent shielding from a broad range of external sources. While the nickel core provides high permeability combined with low losses.

Typical applications Input/output Isolation, Line Matching, Driver, Hybrid applications.



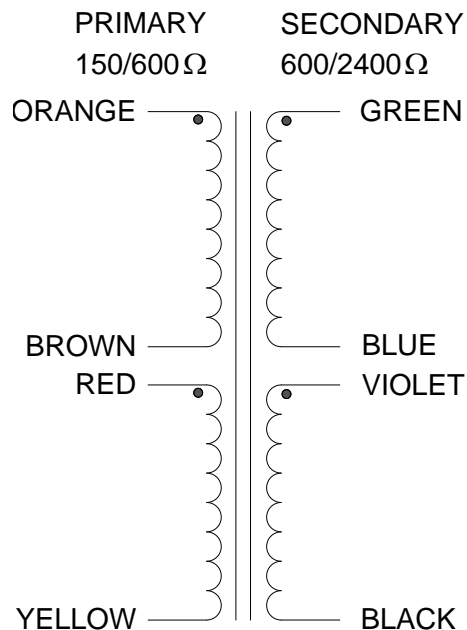
## ELECTRICAL SPECIFICATIONS

Characteristic	Typical
Input Impedance	150/600 Ω
Output Impedance	600/2400 Ω
Output Power	10.0 dbm
DCR	
Primary	58.0 Ω
RED – YEL	29.0 Ω
ORG – BRN	29.0 Ω
Secondary	190.0 Ω
GRN – BLU	95.0 Ω
VIO - BLK	95.0 Ω
Inductance	@ 1.0 kHz, 1.0 V OC
Primary	14.5 H
Secondary	55.0 H
Impedance	@ 1.0 kHz, 1.0 V OC
Primary	7.0 kΩ
Secondary	26.0 kΩ
Frequency Response	±1db from 20 Hz to 20KHz
Turns ratio	1:1, 1:2, 1:4
Insertion Loss	<0.8 db
Return Loss	30 db
Longitudinal balance	-70 db
Dielectric Strength	500 Vrms

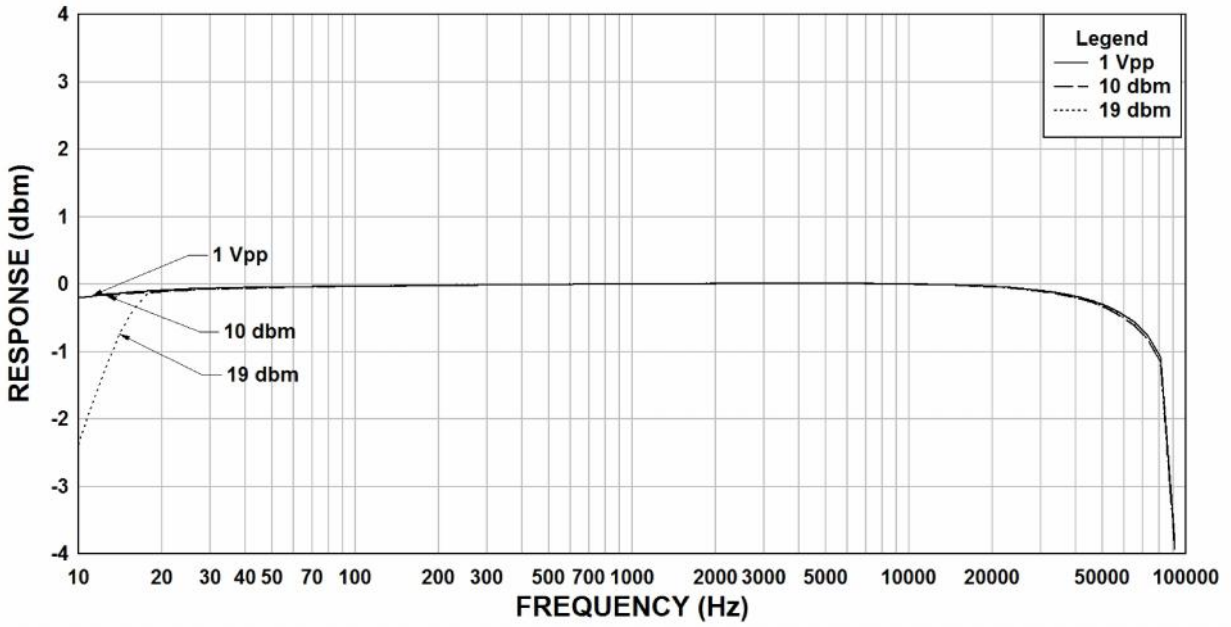


**140PEX**  
5mW 20Hz - 20kHz  
ORG-BRN & RED-YEL: 150/600 Ω  
GRN-BLU & VIO-BLK: 600/2400 Ω  
MADE IN CANADA

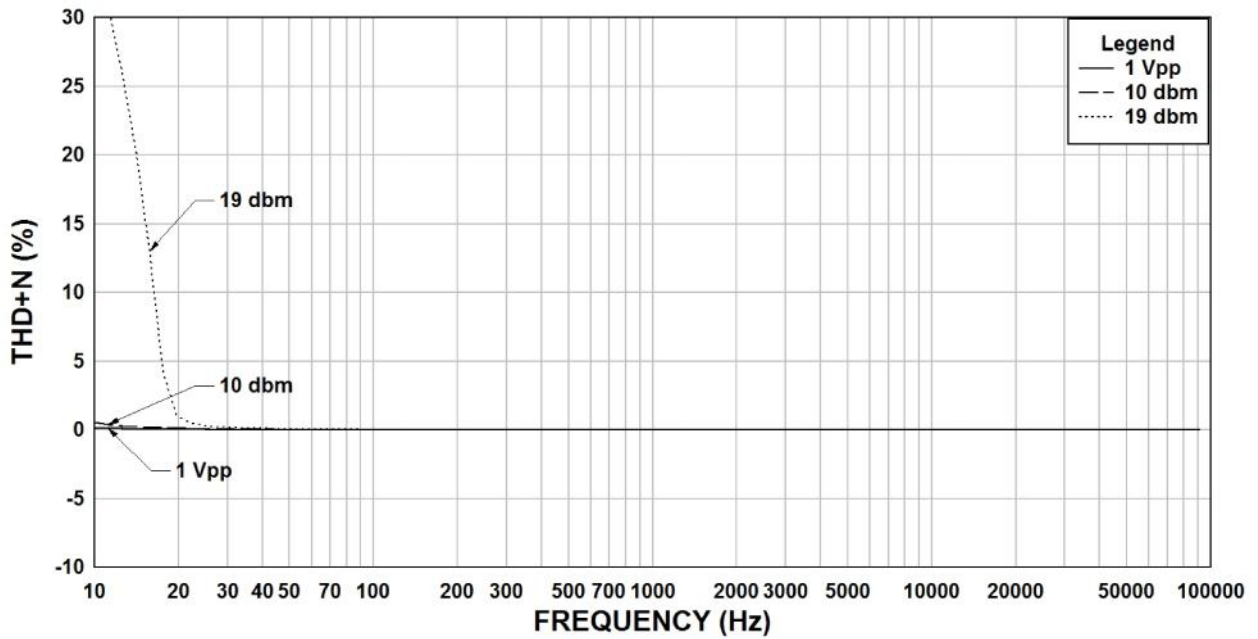
## SCHEMATIC DIAGRAM



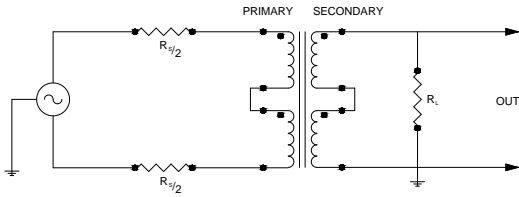
### 140PEX Rs=600, RI=2400 Frequency Response



### 140PEX Rs=600, RI=2400 THD+N



TYPICAL TEST CIRCUIT



Measurement instruments  
 Hp4192a impedance analyzer  
 Hp3456a DVM  
 Keithley 2002 DVM  
 D scope series iii audio analyzer

This drawing and the information in it is the property of Hammond Manufacturing. It may not be reproduced, transmitted or used in any manner whatsoever without the written permission of Hammond Manufacturing. Data subject to change without notice.